



## Revised Junior College Admission Criteria

From the 2028 Joint Admissions Exercise (JAE), the number of subjects required for JC admission will be reduced from 6 to 5.

Students will be able to recalibrate their curriculum load by offering one fewer subject and use the freed-up time to strengthen their development of 21st Century Competencies and pursue other interests.

Now

$$\underline{L1} \text{ } \boxed{R5} \leq 20$$



From 2028 JAE

$$\underline{L1} \text{ } \boxed{R4} \leq 16$$

### Cap on bonus points

The cap on bonus points will be lowered from a maximum of 4 to 3 points.

# JC Rejuvenation Programme

Junior Colleges (JCs) in the programme will be rejuvenated to better cater to future teaching and learning needs of students and staff.

## Phase 1

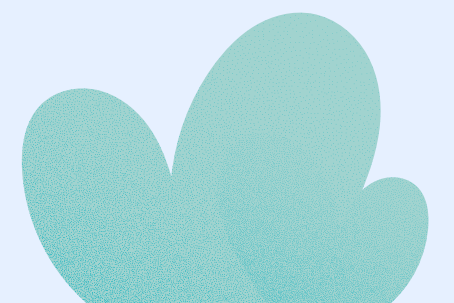
From **January 2028**, Anderson Serangoon JC, Jurong Pioneer JC, Temasek JC and Yishun Innova JC are expected to operate from their rejuvenated campuses.

## Phase 2

Anglo-Chinese JC, Catholic JC, National JC and Victoria JC will be rejuvenated.

## Examples of improved facilities

- Configurable spaces for seminar style teaching, group work and niche programmes.
- Multi-functional workspaces for staff collaboration.



Nurturing Students Holistically and Fulfilling their Potential

## Expansion of Strategic Partnership Co-Curricular Activity (SP-CCA)

Strategic Partnership Co-Curricular Activity (SP-CCA) provides additional CCA options for students beyond their school's offerings, and brings students from different secondary schools together to pursue a common interest, and forge friendships.

MOE, in partnership with MCCY, has expanded the sports SP-CCA to include:

From 2025

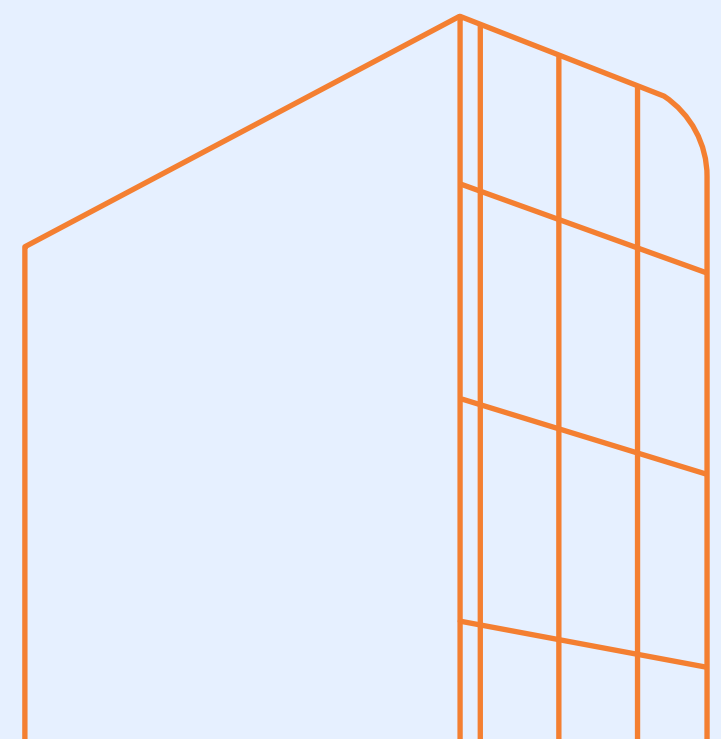


**Canoeing**

From 2026



**Hockey**





# Supporting Students with Special Educational Needs

## 1) National Special Education (SPED) Curriculum

- With the introduction of the remaining two SPED Teaching and Learning Syllabuses (TLSs) in 2024, MOE has established a National SPED Curriculum with seven TLSs, to uplift the quality of curriculum, teaching and learning in SPED schools.

## 2) Further use of technology to enhance SPED school processes

- MOE, together with Social Service Agencies (SSAs) and SPED schools, will further leverage information technology and digitalisation to enhance SPED school processes.
- This reduces administrative workload and provides SPED educators with more time to focus on strengthening teaching and learning outcomes.



### 3) Updates on SPED Communities of Practice (COPs)

- MOE has engaged SSAs and SPED schools to set up SPED COPs and cross-schools Networked Learning Communities to deepen disability knowledge, foster professional collaborations and share good practices across the SPED sector.
- A second SPED COP on autism will be set up in the second half of 2025.

### 4) Internship and employment support for students with Special Educational Needs (SEN) in ITE

- The ITE-SG Enable Internship and Employment Support Programme will be expanded to support more students in ITE with SEN as they transit to employment.
- Started in mid-2024, this programme provides students training in resume and interview preparation, and workplace communication.
- Students are then matched to suitable internship opportunities, and receive further on-site job coaching.



# Extension of ITE Progression Award

The ITE Progression Award (IPA) supports ITE graduates to upskill to a diploma earlier to better prepare them for progression prospects in their chosen professions.

In FY2024, we awarded

Estimated  
**\$90 Million**

Benefitting  
**~12,000**  
ITE graduates who  
enrolled in or completed  
their diplomas

From **1 June 2025**, the IPA will include Singapore Workforce Skills Qualification (WSQ) diploma programmes\*.

\*The IPA also includes polytechnic full- and part-time diplomas, ITE technical, technical engineer and work-study diplomas, as well as diplomas from NAFA, LASALLE and NIEC.



# New Singapore University of Social Sciences (SUSS) Campus

We will support SUSS to build a new campus at the site and vicinity of the former Rochor Centre by the mid-2030s.

The central location will increase the university's accessibility for SUSS's diverse student body, which includes young students earning their first degree before work as well as adult learners.





# Enhancing Support for Mid-Career Individuals under the SkillsFuture Level-Up Programme

The SkillsFuture Mid-Career Training Allowance (TA) supports mid-career individuals pursuing full-time and part-time long-form training.

The amount of TA and respective application dates for full-time and part-time training programmes will vary.

## Full-Time Programmes\*

Application opens 10 March 2025

# 50%

of one's average income over the latest-available 12 months, with a minimum allowance of \$300/month and maximum allowance of \$3,000/month

## Part-Time Programmes

From early 2026

# \$300

per month

\*Individuals with income in the latest-available 12 months will qualify for the full-time training allowance.

